

classes

relation type properties

further properties

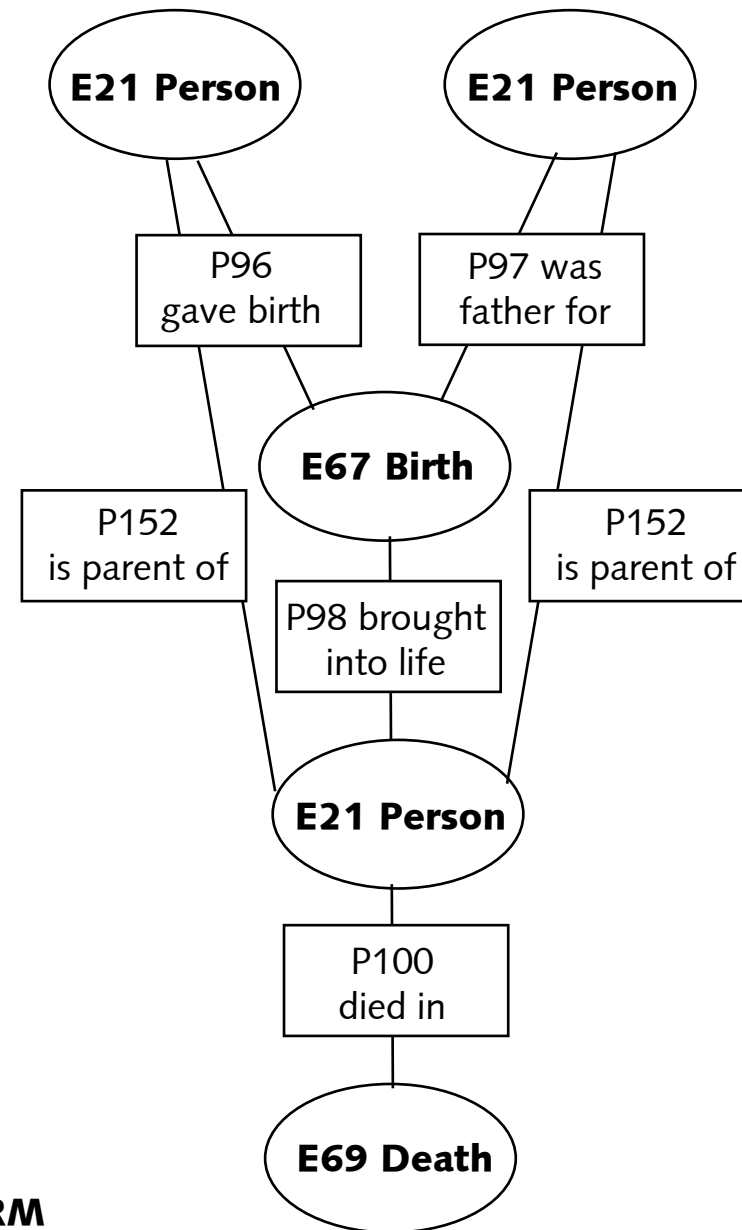
Differences to CIDOC:

- lesser complexity, possibly more complex parsing
- class person has subclass man or woman
- birth and death are time properties
- not following a standard

**Example for an ontology in media.REIFF**

entities

properties



**CIDOC CRM**



## Comparison to CIDOC Conceptual Reference Model

(for better readability, the reverse meaning of the properties is not mentioned)